



Eddie Bauer® Rugged Ripstop Soft Shell Jacket EB534



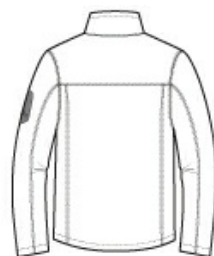
A rugged soft shell for hitting the trails or the town. A tough, textured ripstop shell and a warm plush sherpa fleece lining make this versatile jacket outdoorsy, yet technical. 3000MM fabric waterproof rating. 3000G/M2 fabric breathability rating. Reverse coil zippers, front zippered pockets, welded zippered left sleeve pocket, open cuffs with woven contrast insets and an open hem with drawcord and toggles. Contrast Eddie Bauer logo embroidered on the left sleeve. Made of a 100% polyester woven ripstop shell bonded to a water-resistant laminated film and a 100% polyester sherpa fleece lining.

CARE INSTRUCTIONS

Machine wash cold with like colors. Only Non-chlorine bleach when needed. Tumble dry low. Cool iron if necessary.

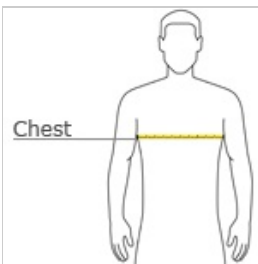


front



back

HOW TO MEASURE



CHEST

With arms down at sides, measure around the upper body, under arms and over the fullest part of the chest.

SIZE CHART

| | XS | S | M | L | XL | 2XL | 3XL | 4XL |
|-------|-------|-------|-------|-------|-------|-------|-------|-------|
| Chest | 32-34 | 35-37 | 38-40 | 41-43 | 44-46 | 48-50 | 52-54 | 55-57 |

COLOR INFORMATION



Black/ Black
PMS NTR BLACK C



Canteen Grey/
Black
PMS 7533 C



Grey Steel/ Black
PMS BLACK 7 C