



# New Era® Ladies Performance Terry Short Sleeve Hoodie LNEA533



The cut-off sleeves give this hoodie a retro athletic look.

- 6.5-ounce, 100% polyester French terry
- 3-panel hood
- Heat transfer label for tag-free comfort
- Round drawcords with New Era metal tips
- Dolman sleeves with raw edge
- Black mesh detail underneath the sleeves
- Front pouch pocket
- Debossed silicone New Era flag logo on pocket
- Drop tail hem

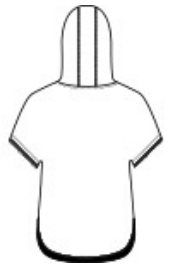
\*\*

### CARE INSTRUCTIONS

Machine wash cold with like colors. Only non-chlorine bleach if needed. Tumble dry low, cool iron if necessary.

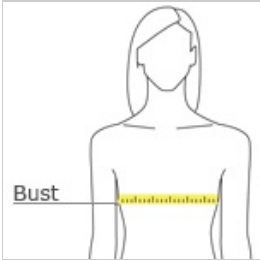


front



back

### HOW TO MEASURE



#### BUST

Measure under the arm and around the fullest part of the bust with arms down, keeping tape horizontal.

### SIZE CHART

	XS	S	M	L	XL	2XL	3XL	4XL
Size	2	4/6	8/10	12/14	16/18	20/22	24/26	28/30
Chest	32-34	35-36	37-38	39-41	42-44	45-47	48-51	52-55

### COLOR INFORMATION



Black  
PMS NTR BLACK  
C



Dusty Mauve  
Heather



Graphite  
Heather



True Navy  
Heather  
PMS 533C